

Basic Setup Steps

1. Power the module and connect via ethernet to a computer.
2. Set IP address on computer to the same network as module.
(Ex: 192.168.1.50) *Note: restore computer settings after setup.*
3. To configure module, open web browser and enter:
`http://192.168.1.2/setup.html`
4. In General Settings under WiFi, enter the WiFi settings.
5. Assign the module a permanent IP address or enable DHCP.
6. Restart the module for the settings to take effect.

Factory Default Settings

IP Address: 192.168.1.2

Subnet Mask: 255.255.255.0

Control Page Web Address: `http://192.168.1.2`

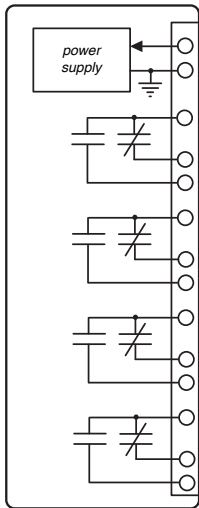
Control Password: *(no password set)*

Setup Page Web Address: `http://192.168.1.2/setup.html`

Setup Username: admin

Setup Password: webrelay *(all lower case)*

WebRelay-Quad (X-WR-444W) | Pinout Diagram



Power

- Vin+** DC Power Supply Input (see below*)
Vin- DC Power Supply Input (Ground)

Relay Contacts

- 1C** Relay 1 Common
1NC Relay 1 Normally Closed
1NO Relay 1 Normally Open
2C Relay 2 Common
2NC Relay 2 Normally Closed
2NO Relay 2 Normally Open
3C Relay 3 Common
3NC Relay 3 Normally Closed
3NO Relay 3 Normally Open
4C Relay 4 Common
4NC Relay 4 Normally Closed
4NO Relay 4 Normally Open

*Vin+ Voltage:

I Model: 9-28VDC

E Model: POE or 9-28VDC



www.ControlByWeb.com

1681 West 2960 South, Nibley, UT 84321, USA